

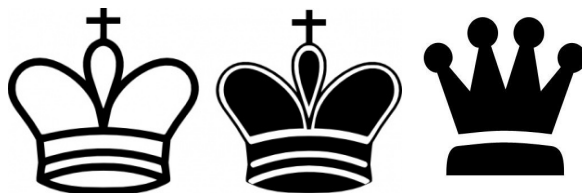
# The Chessmen

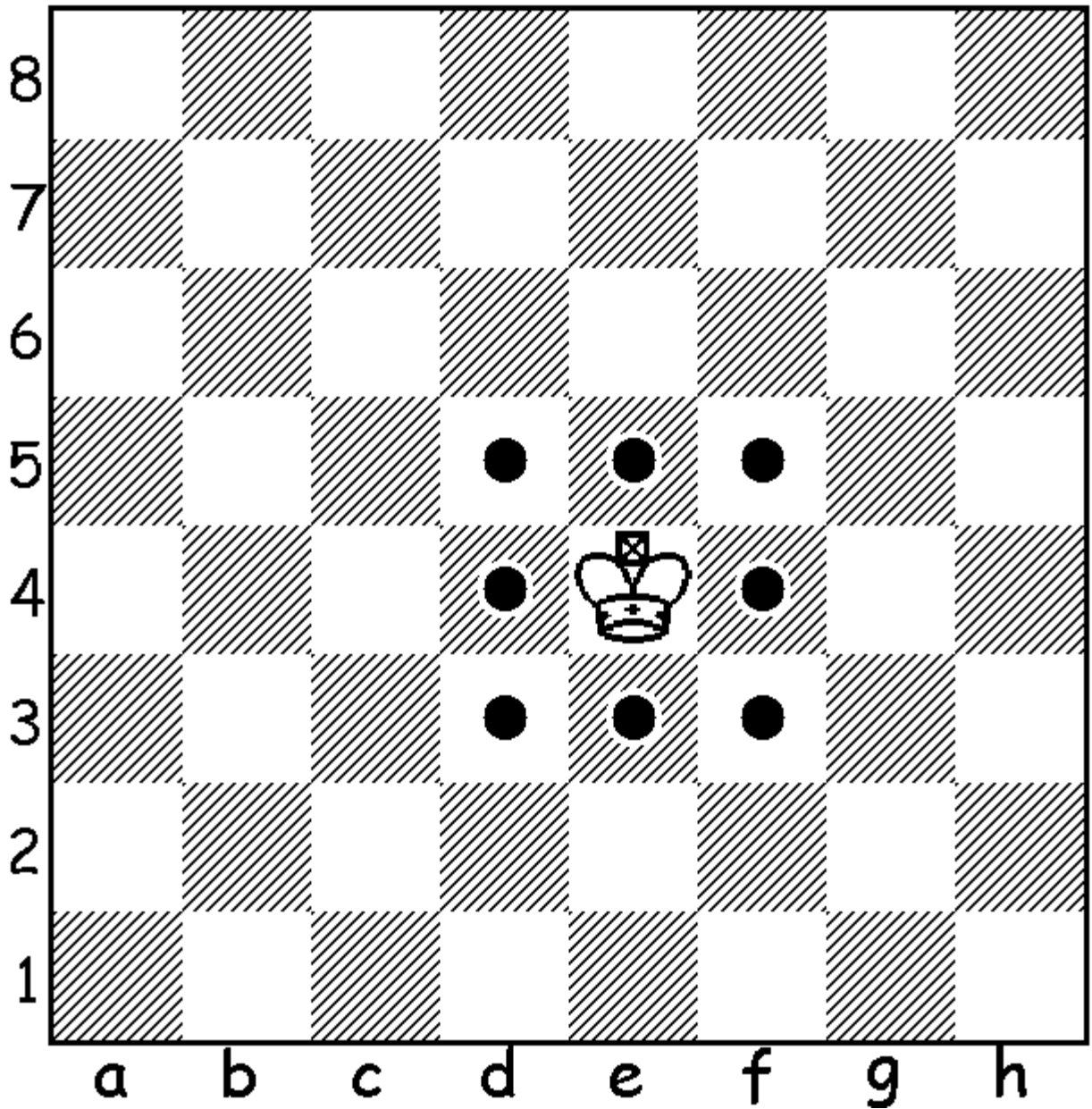


## The King

The king is the most important of all the chessmen. The game of chess is played around him. You want to keep the king safe. When the king is trapped with no way out he must surrender and the game is over. The original name for the game of chess was “Shah” which is the Oriental word for “king”.

Here are some common symbols for the king in books or magazines.





### How the King Moves:

The king may move one space in any direction. He cannot move to a space occupied by one of his own men. He may not move to a space where he would be in danger.