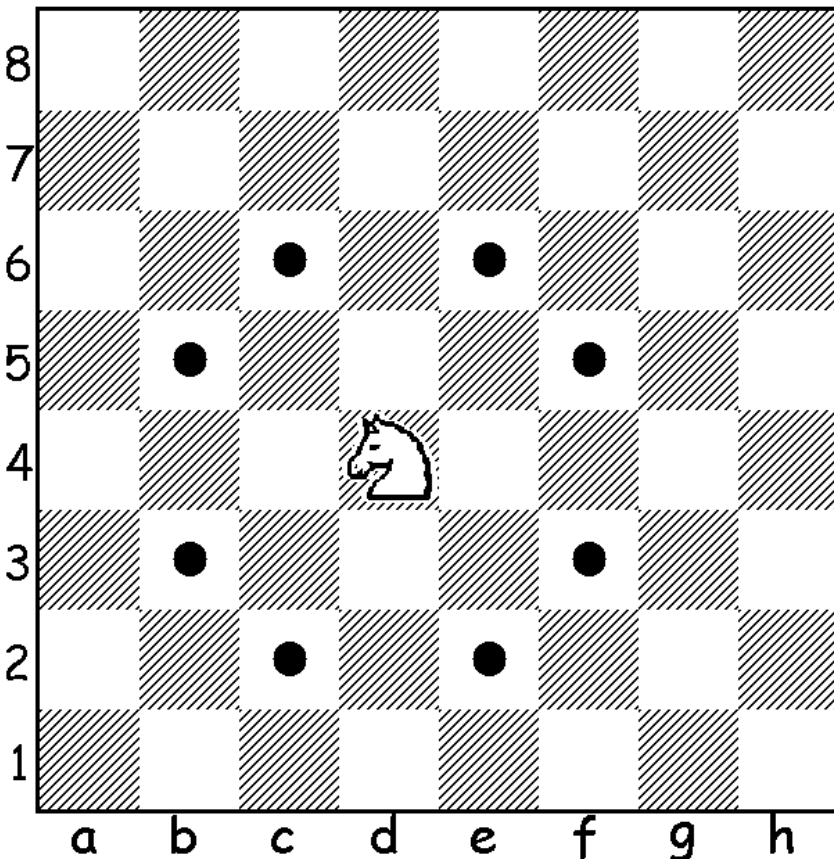




The Knight

The knight is designed to move like the cavalry which was soldiers riding horses. It can be a tricky piece to keep track of. It is the only piece that can jump over other pieces. It always lands on the color opposite from which it started.



The knight moves two squares forward and then one square left or right. It cannot be on the same square as one of its own pieces. Below are the common symbols or the knight.

