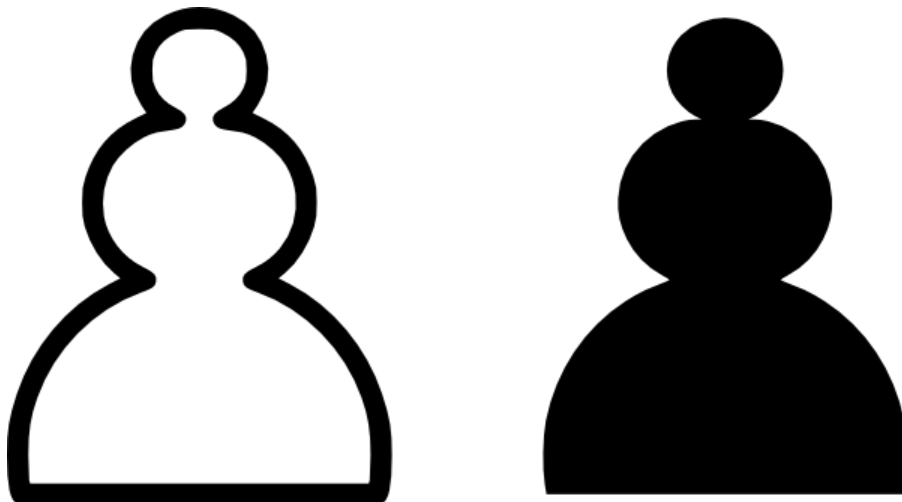


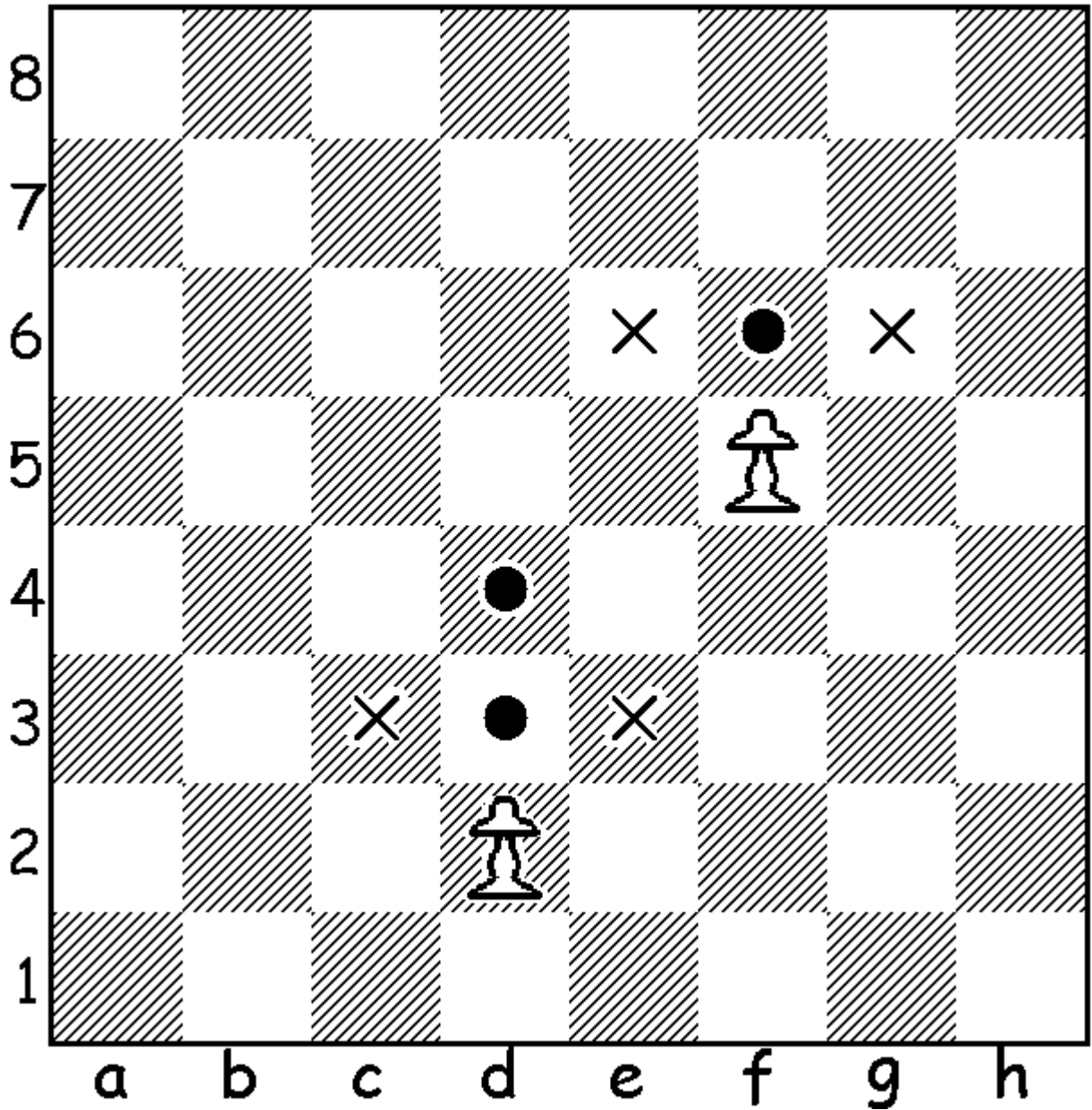


The Pawn

The pawn is the weakest piece on the board. Each side gets eight pawns. They are placed in the eight squares of the second row. The pawn may move one or two spaces on its first move and only one space forward after that. It cannot move backwards or left or right.. It may capture a piece that lies diagonal to it. If a player's pawn reaches the end of the chess board, he may trade it in for a queen, rook, bishop, or knight.



Common symbols for the pawn.



On its first move a pawn may move ahead one or two spaces (if possible). After that it may only move one space at a time. It cannot move backward or directly left or right. It cannot capture a piece directly in front of it. It captures pieces diagonally left or right one square at a time.