

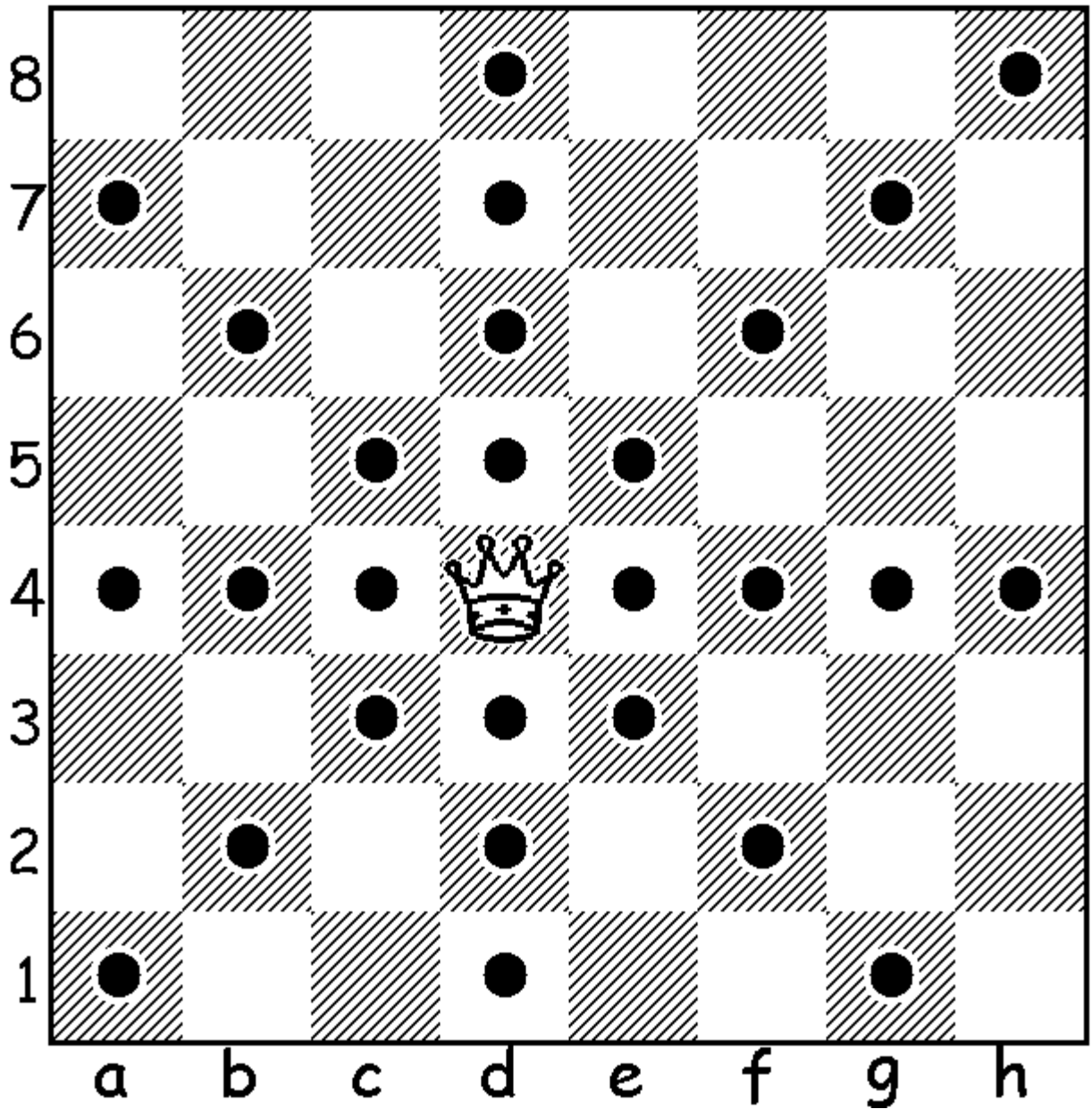


## The Queen

The Queen is the most powerful piece on the board. It is also the most mobile. When setting up a chess board, the queen is always placed on the square that matches her color. For example, at the start of a game the black queen is placed on a black square.

Here are some common symbols for the queen you might find in books or magazines.





### How the Queen Moves:

The queen moves in any direction and as far as she can. She cannot move to a space occupied by her own men.